

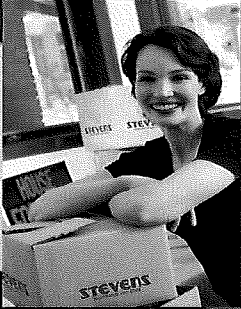
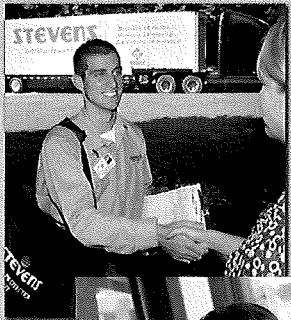
Life has plenty stressors...
Finding a Mover to Accommodate *your needs*
doesn't have to be one

Stevens Worldwide Van Lines

offers:

Customized Packages to Fit Your Relocation Budget

- **Free No-obligation Estimate-** Our certified relocation consultant will provide you with an accurate estimate and assist in designing a package within your budget.
- **Competitive Pricing-** Compare our quality and service to others and you'll discover our rates are cost-effective.
- **Planning Your Move-** A Stevens move consultant will be assigned as your single point-of-coordination assisting you throughout your move.
- **Identity Protection-** Relocating may leave personal information vulnerable. Stevens is providing Chrysler employees with one year free identity theft protection with their move.
- **Connections Support-** Chrysler employees will receive free connection support for home services with their move.
- **Support Squad™-** Chrysler employees receive 6 months complimentary technical support. Our team will diagnose fix and support hardware and software for your personal to gaming devices.
- **Certified Moving Crews-** Stevens' drivers are drug tested, background checked and professionally trained.
- **Stevens Home Protection Kit™-** The Stevens Home Protection Kit™ is designed to guard against unforeseen damages to possessions and residences.
- **Discounted Storage-** Store your items in Stevens' clean, dry and secure storage locations.



CHRYSLER



Contact your Stevens Representative:

Galen Swab

216.587.1160 -OR- 800.843.3065

swab@stevensworldwide.com

www.stevensworldwide.com/chrysler



STEVENS
worldwide van lines